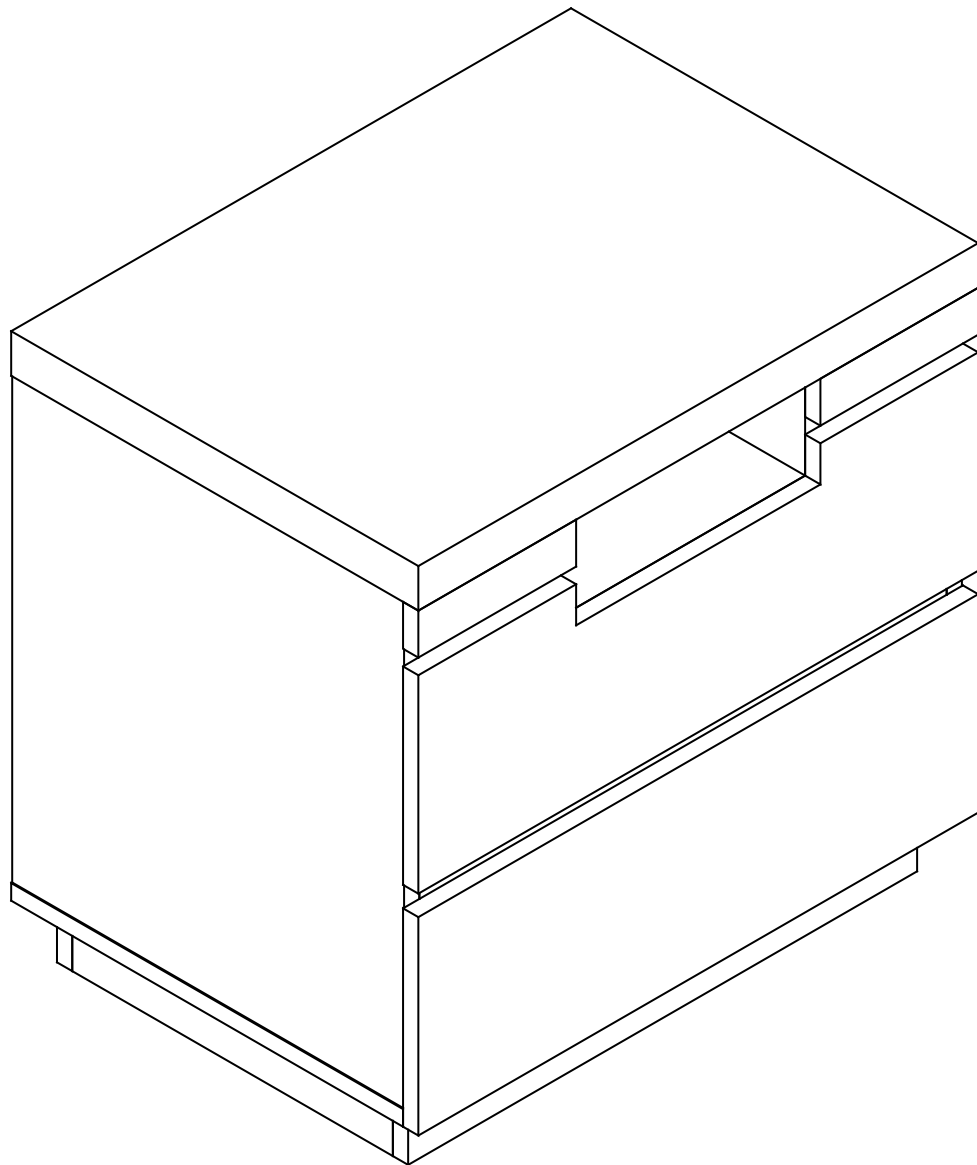


# Sadie

## Bedside Table

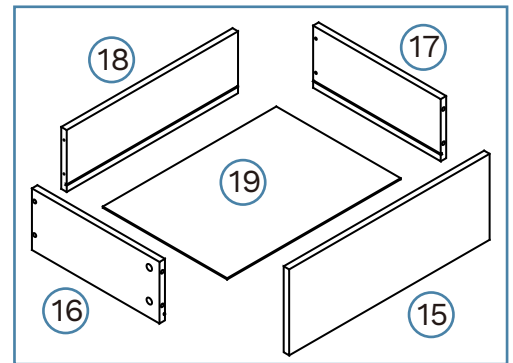
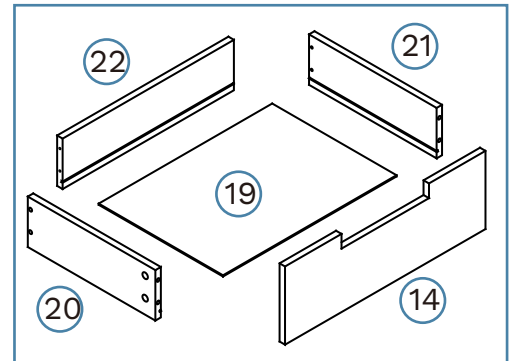
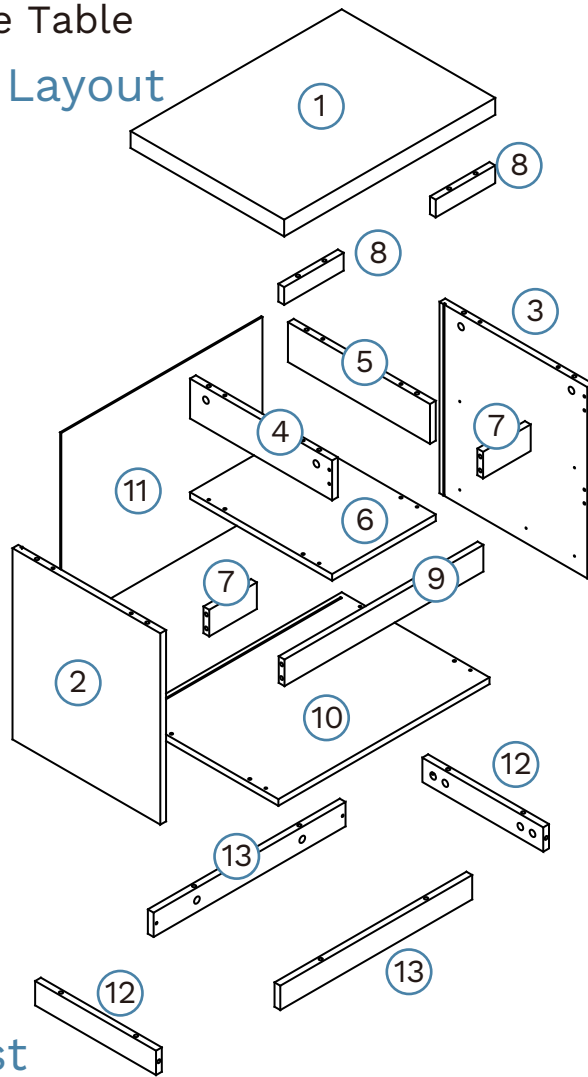
Thank you for your purchase. Please follow the instructions for correct assembly. While we took great effort to ensure these assembly instructions were correct at the time of printing, sometimes updates are required post production. For the most up to date versions please refer to the product page on our website. [mocka.com.au/mocka.co.nz](http://mocka.com.au/mocka.co.nz)



# Sadie

Bedside Table

## Panel Layout

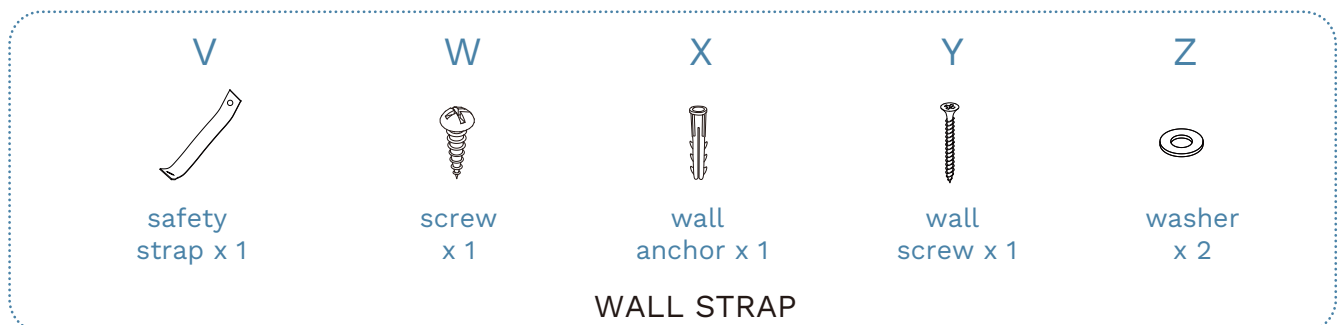
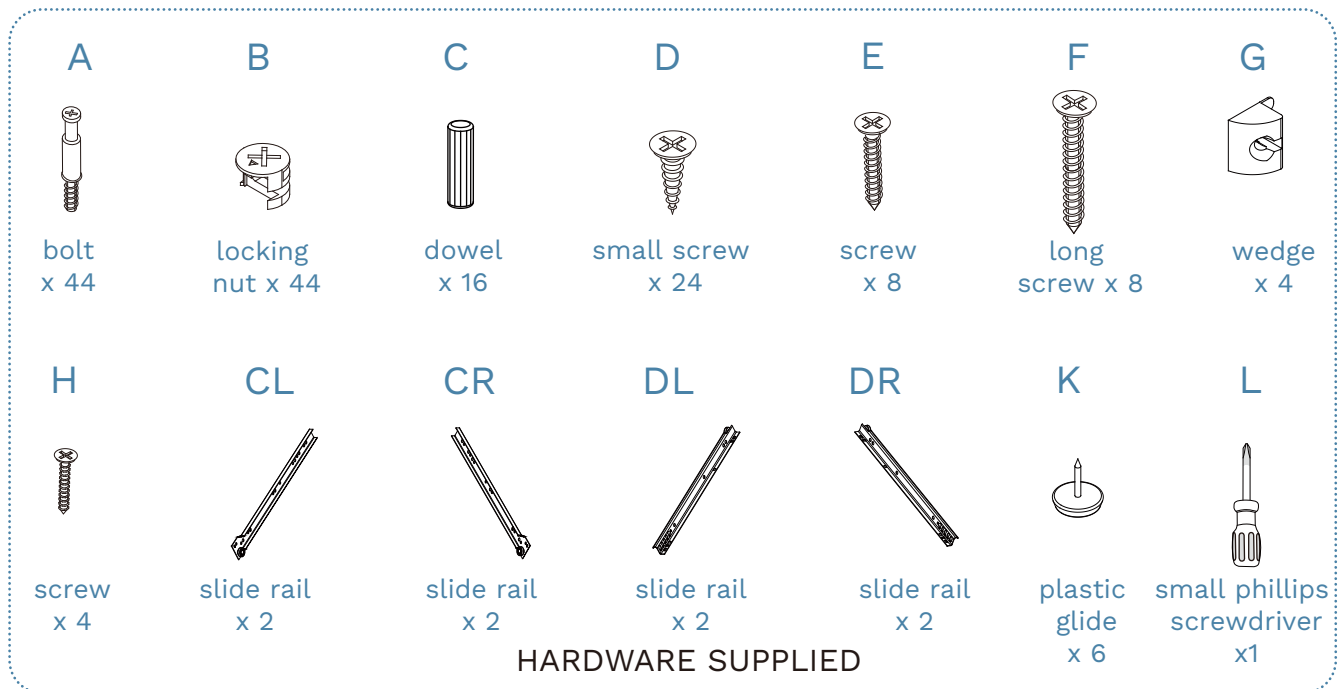


## Partlist

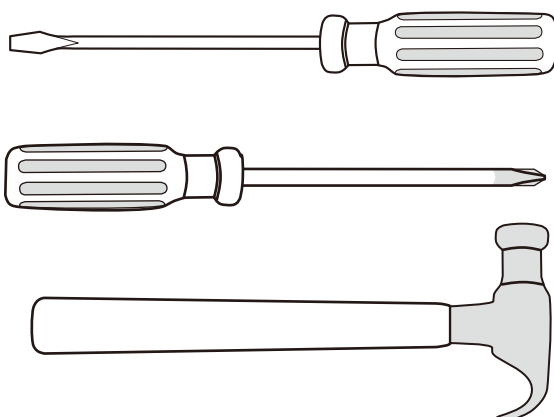
①	Top Panel	x1	⑫	Rail	x2
②	left Side Panel	x1	⑬	Rail	x2
③	Right Side Panel	x1	⑭	Drawer Front	x1
④	Divider	x1	⑮	Drawer Front	x1
⑤	Divider	x1	⑯	Left Drawer Side	x1
⑥	Shelf Panel	x1	⑰	Right Drawer Side	x1
⑦	Rail	x2	⑱	Drawer Back	x1
⑧	Rail	x2	⑲	Drawer Base	x2
⑨	Rail	x1	⑳	Left Drawer Side	x1
⑩	Bottom Panel	x1	㉑	Right Drawer Side	x1
⑪	Back Panel	x1	㉒	Drawer Back	x1

## Sadie

### Bedside Table



**WARNING:** Any furniture that is not anchored to a wall has the potential to tip over in certain circumstances, i.e. if a child attempts to climb up on the furniture or in the event of an earthquake. Accordingly, we recommend that all furniture is anchored to a wall. We supply a free safety wall anchor with all furniture sold and we recommend these are used to prevent your product tipping. The fixing device provided should fit most wall types, but please note that different wall materials may require different fixing devices from those supplied.

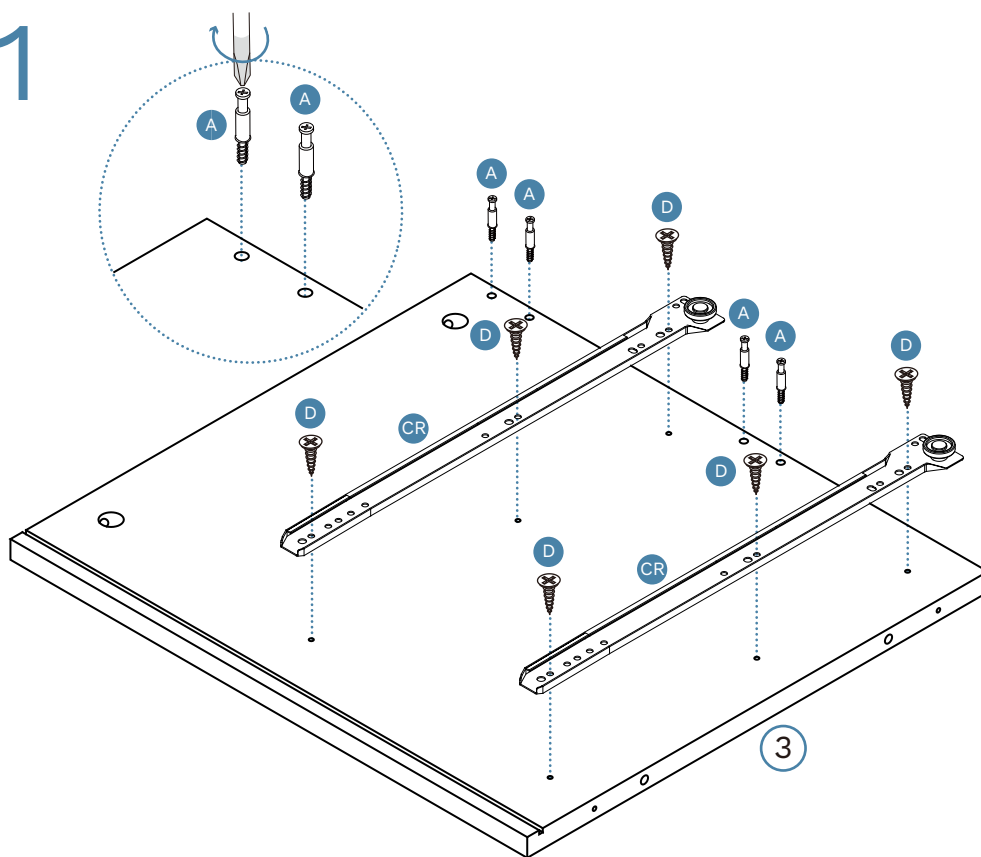


Phillips & Flathead screwdrivers  
and hammer required


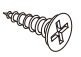

**For quicker assembly, we recommend the  
use of a power drill on a low-speed setting.**

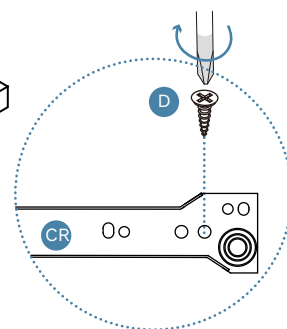
## Sadie Bedside Table

1

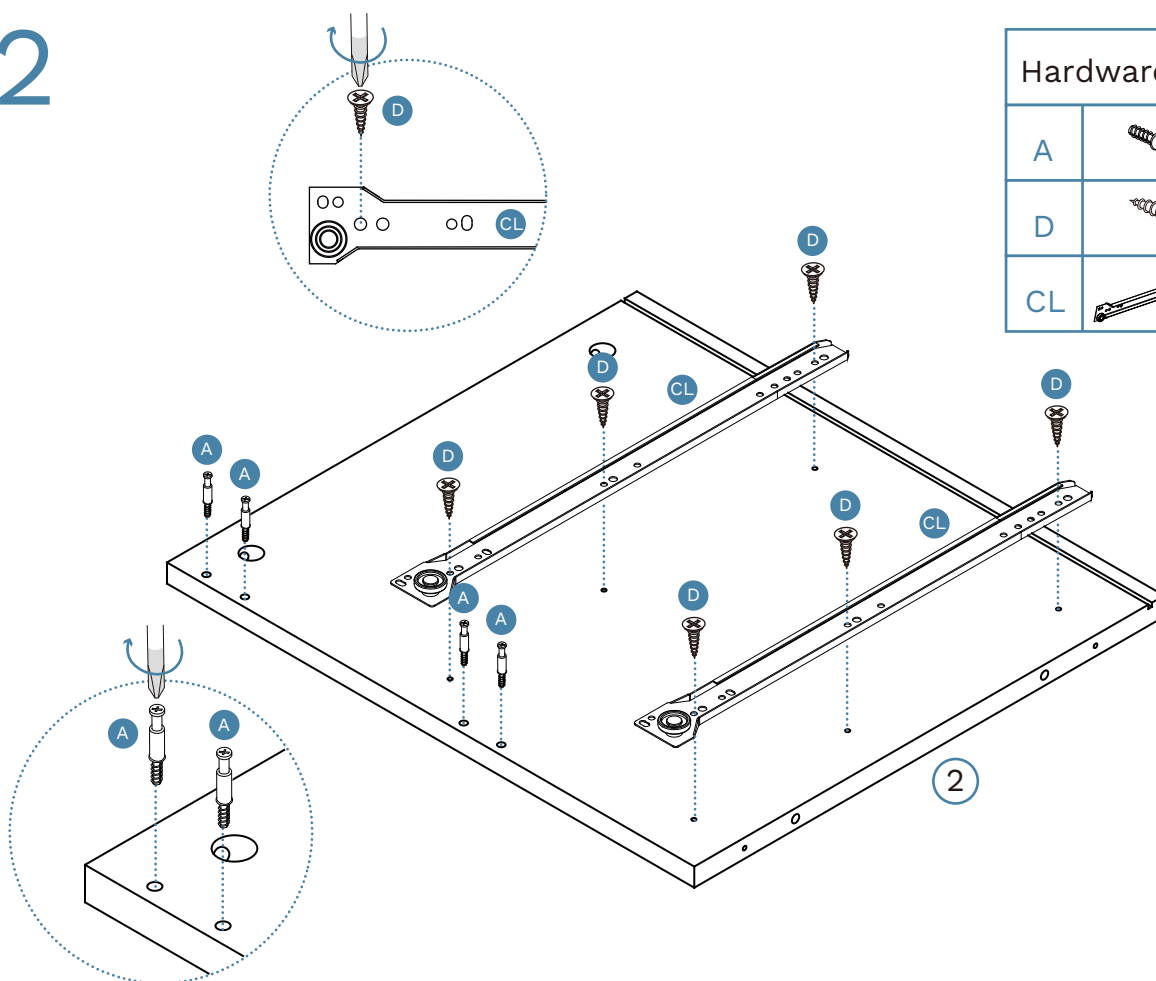


### Hardware Needed




A		x4
D		x6
CR		x2



2

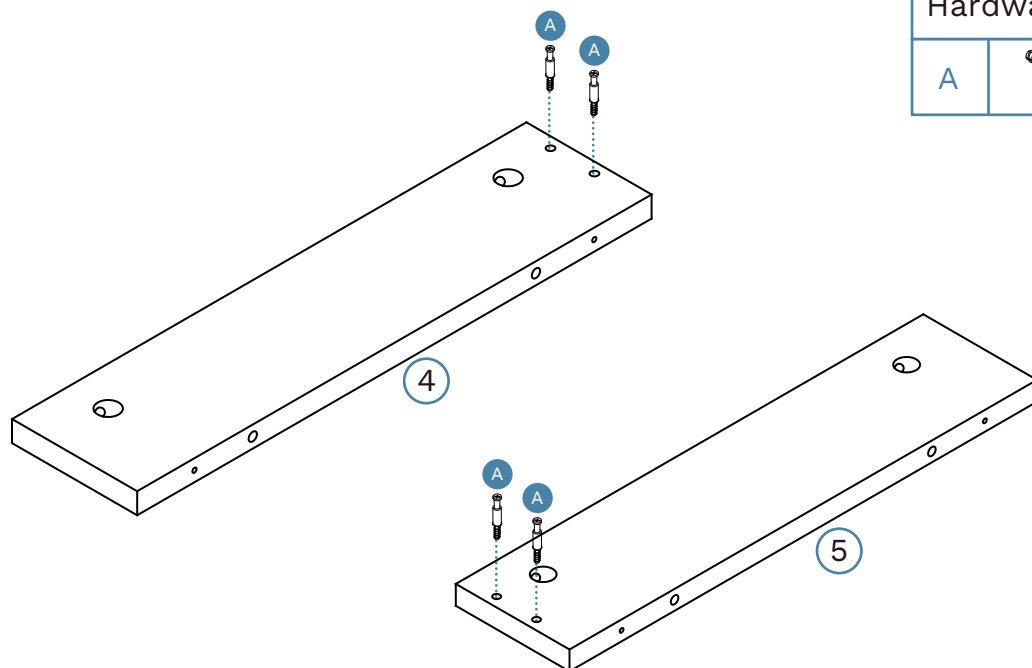


### Hardware Needed


A		x4
D		x6
CL		x2

## Sadie Bedside Table

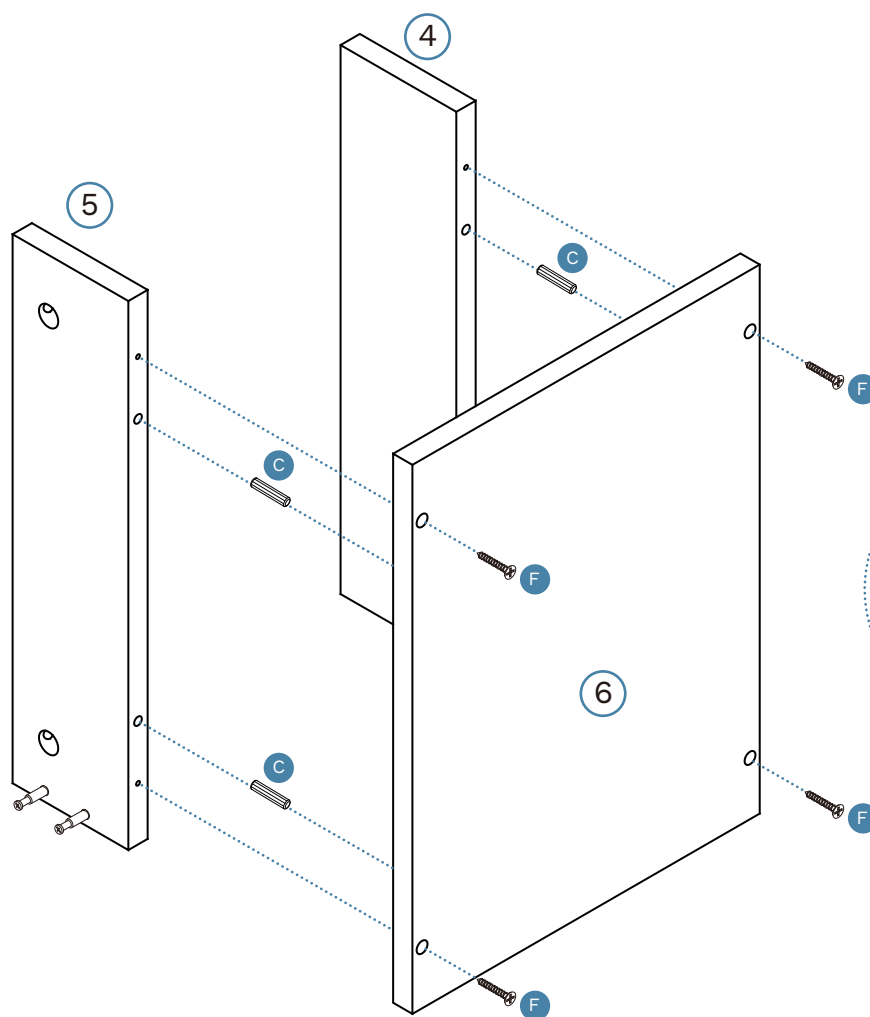
### 3





#### Hardware Needed

A		x4
---	---	----

### 4

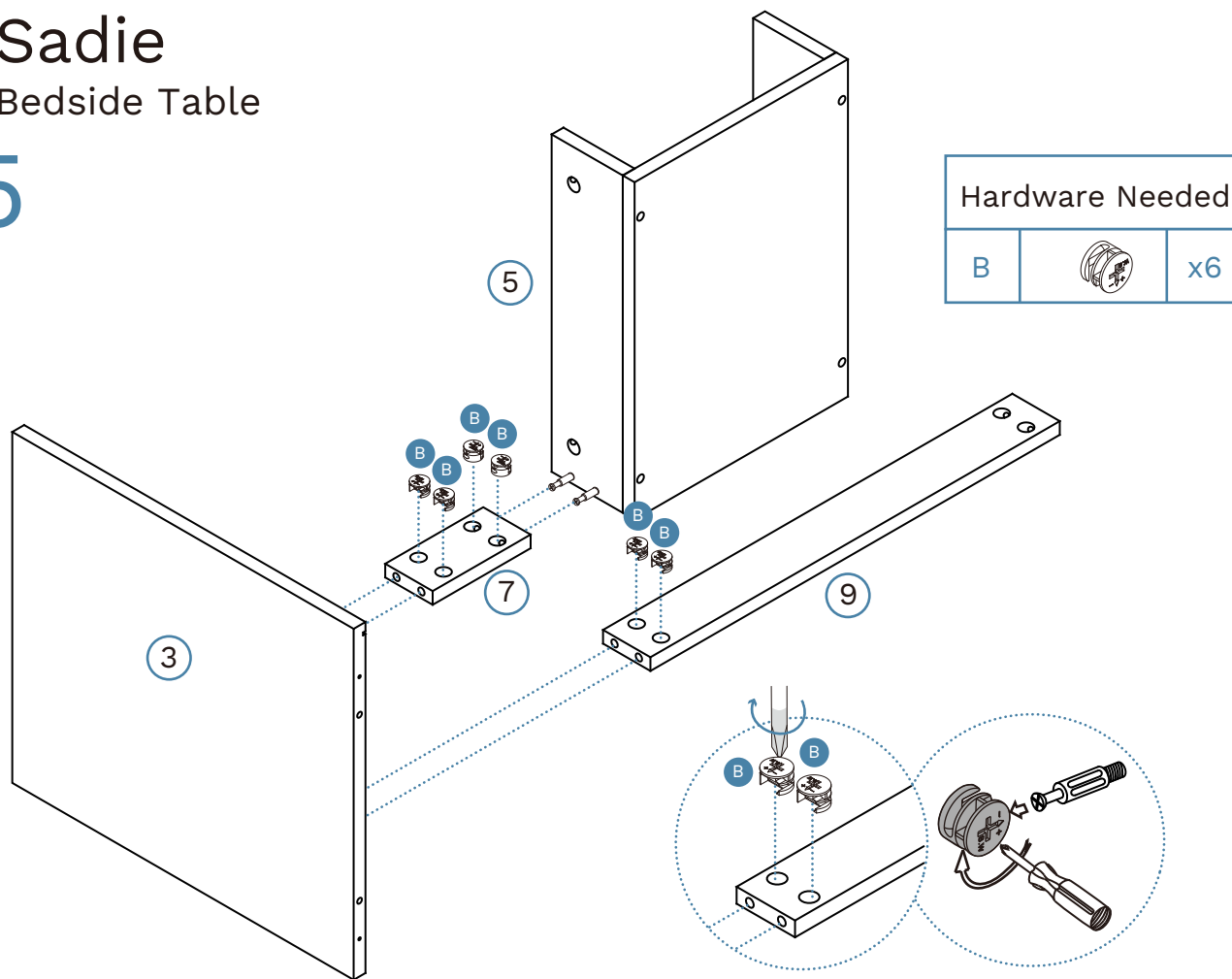


#### Hardware Needed

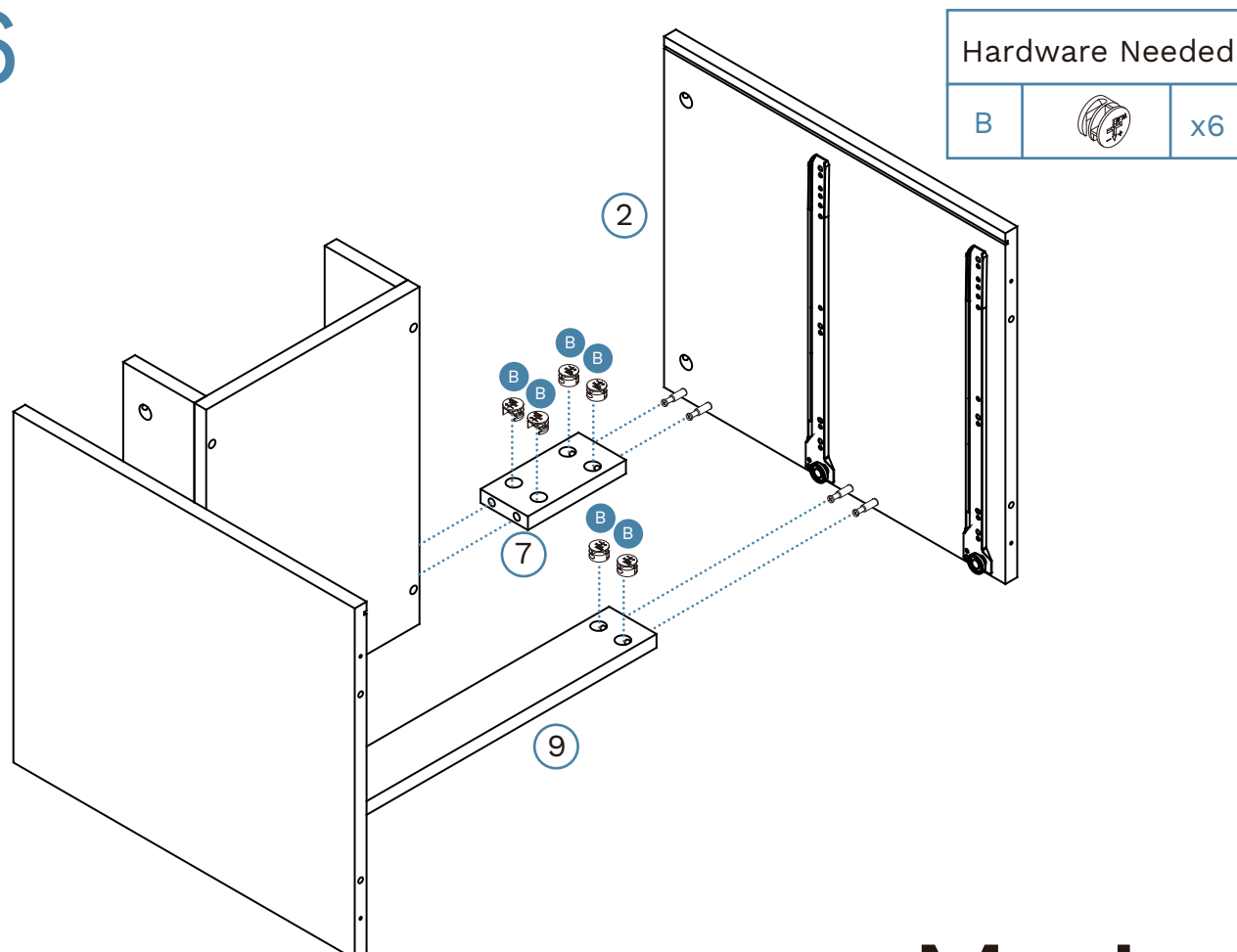
C		x4
F		x4

## Sadie Bedside Table

### 5

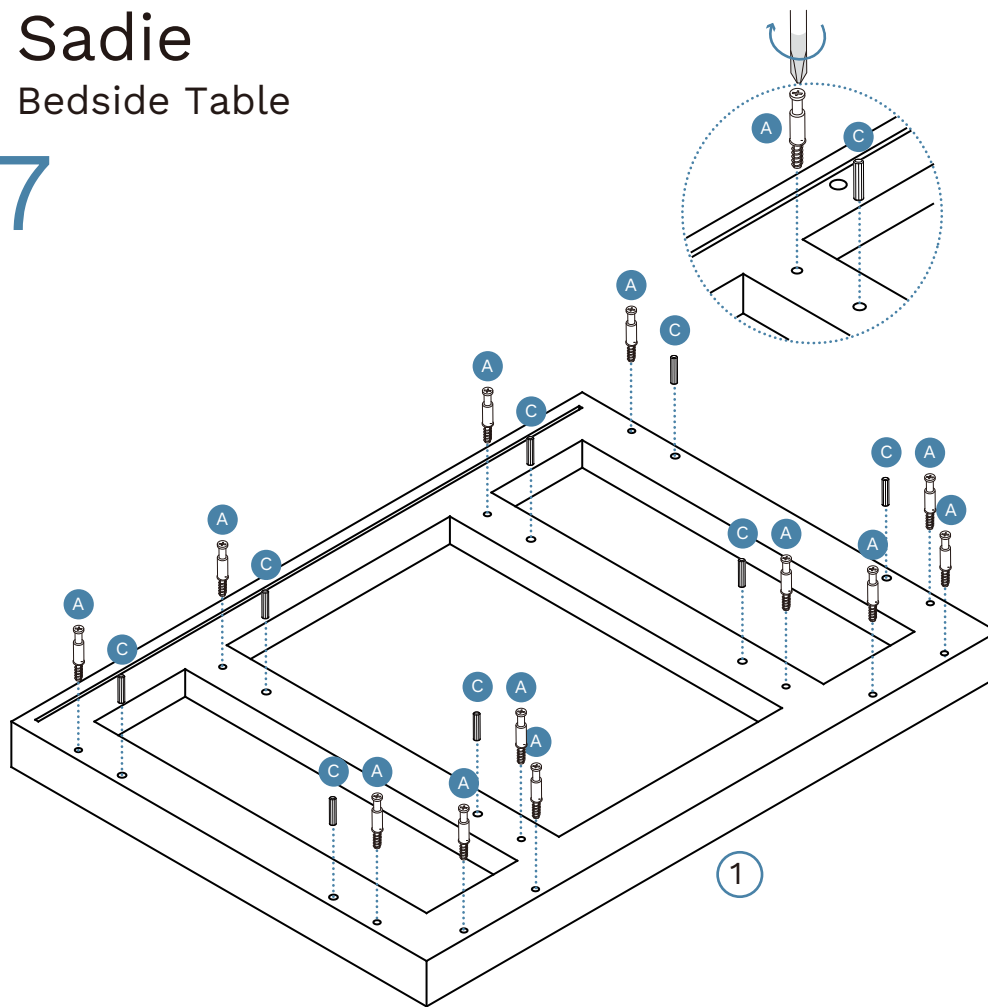


### 6





## Sadie Bedside Table

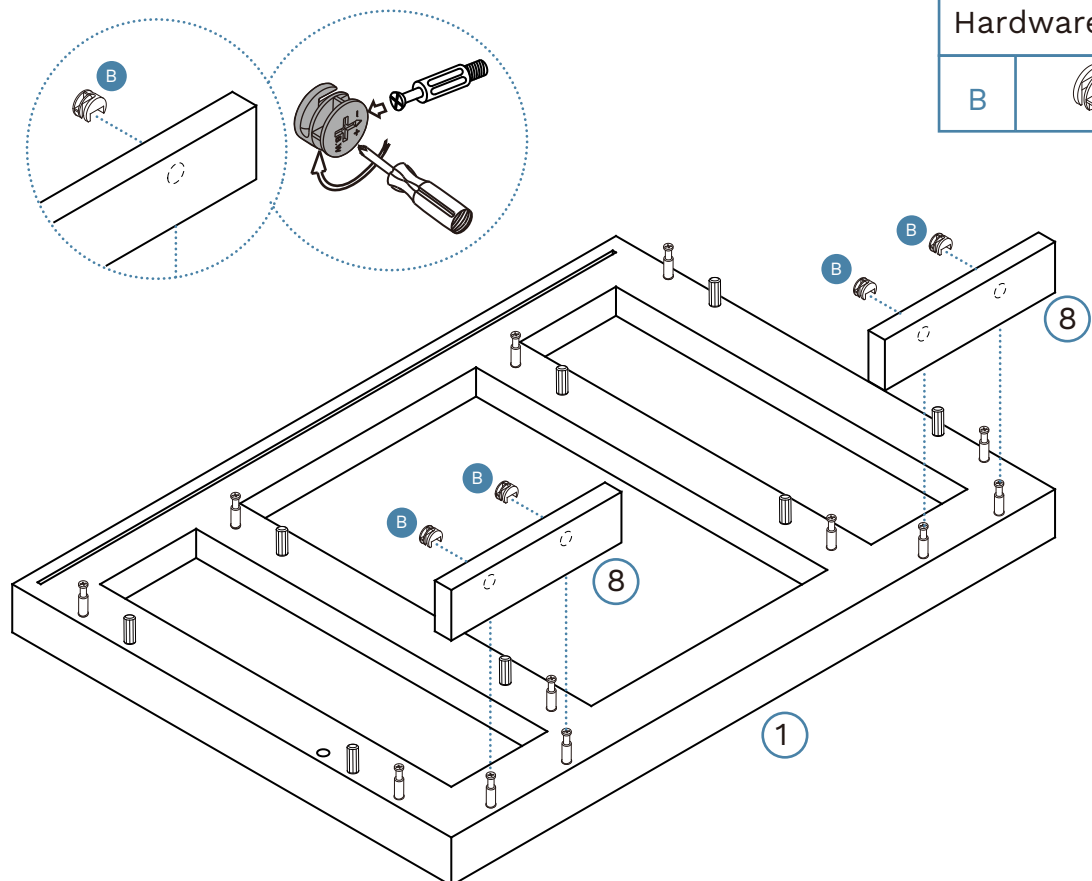
7



### Hardware Needed

A		x12
C		x8

8

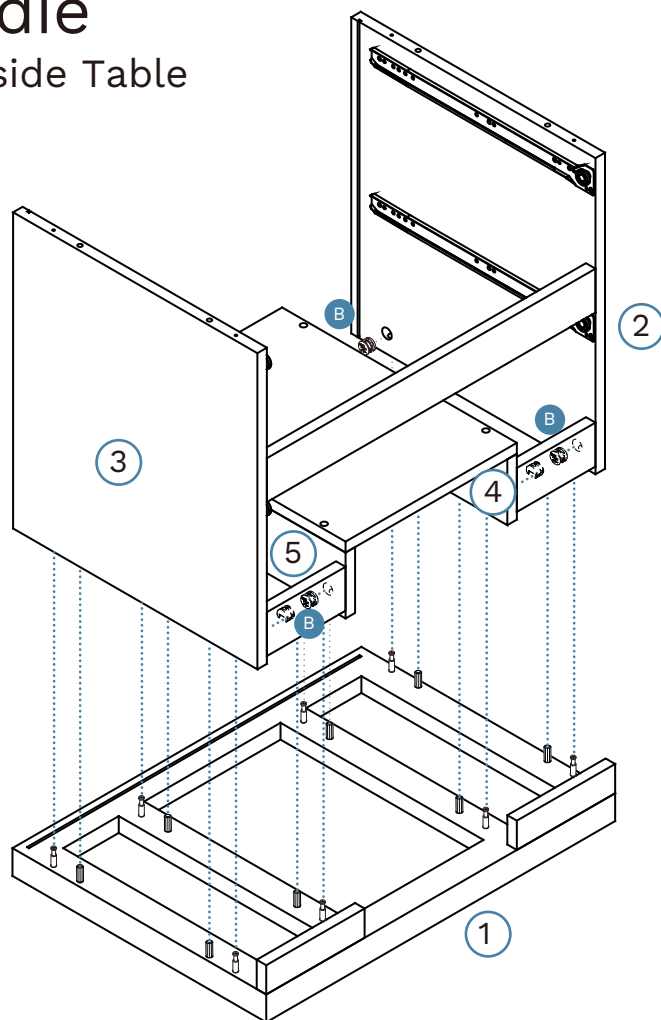


### Hardware Needed


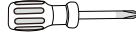
B		x4
---	---	----

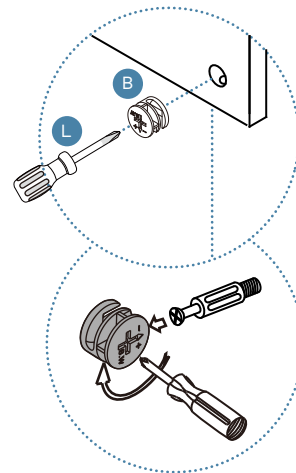
## Sadie Bedside Table

9

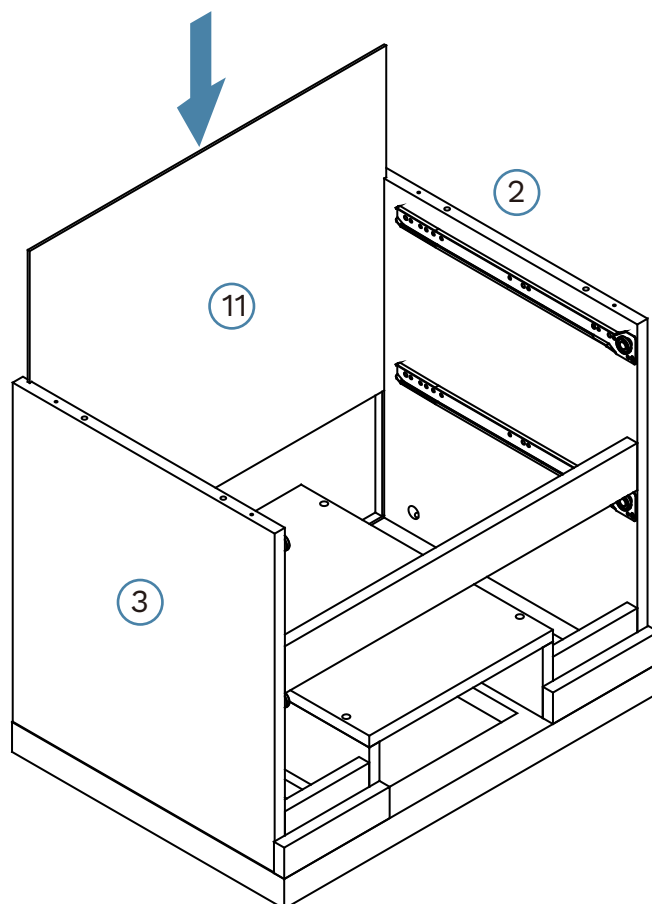


### Hardware Needed

B		x8
L		x1



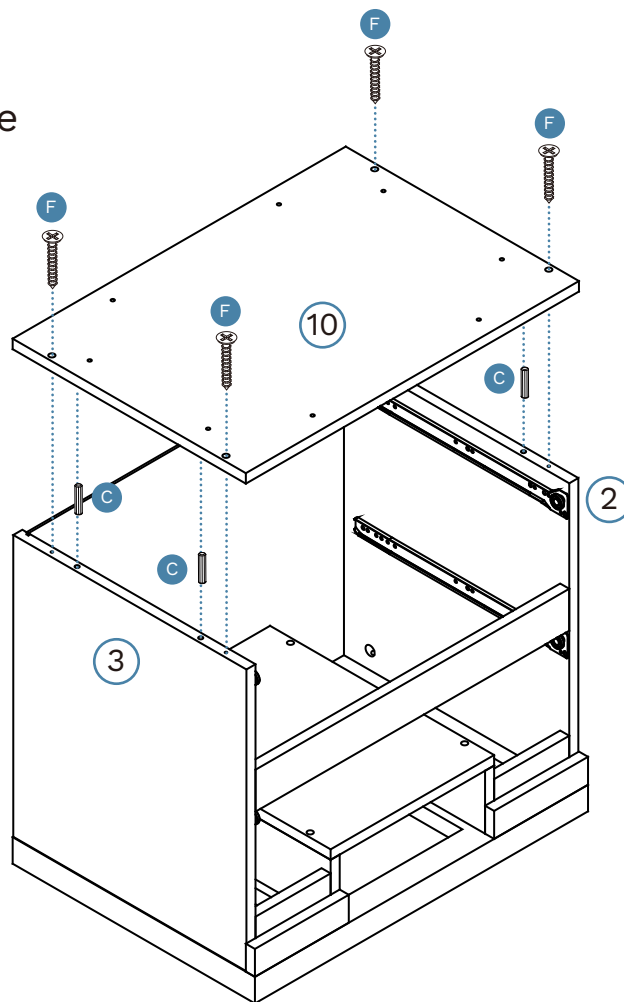
10







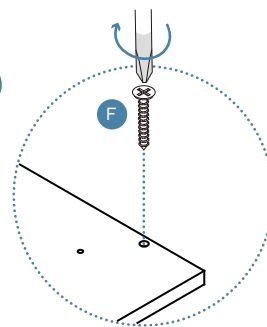
## Sadie Bedside Table

### 11

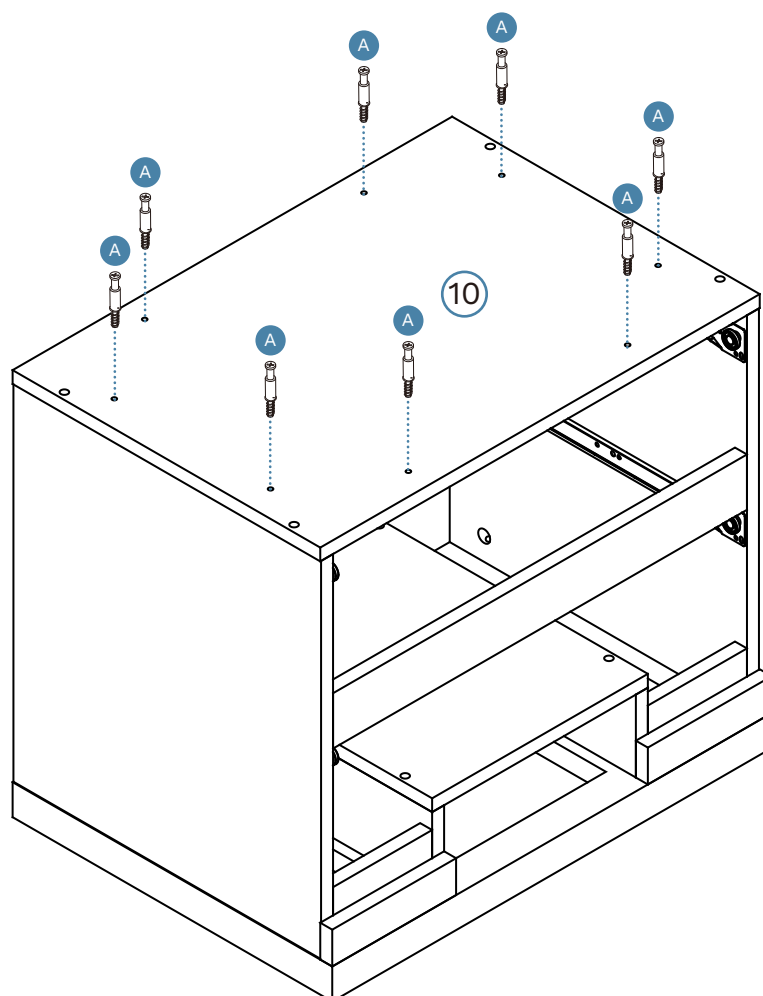


#### Hardware Needed

C		x4
F		x4



### 12

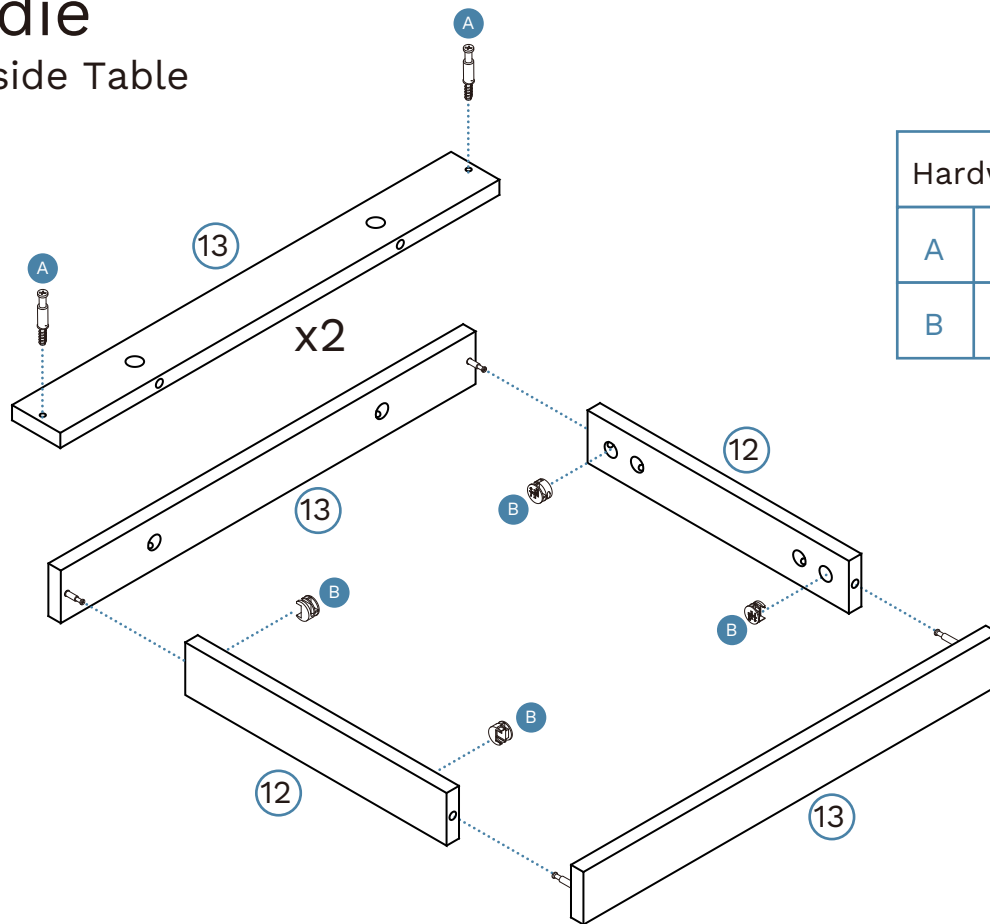


#### Hardware Needed



A		x8
---	---	----

## Sadie Bedside Table

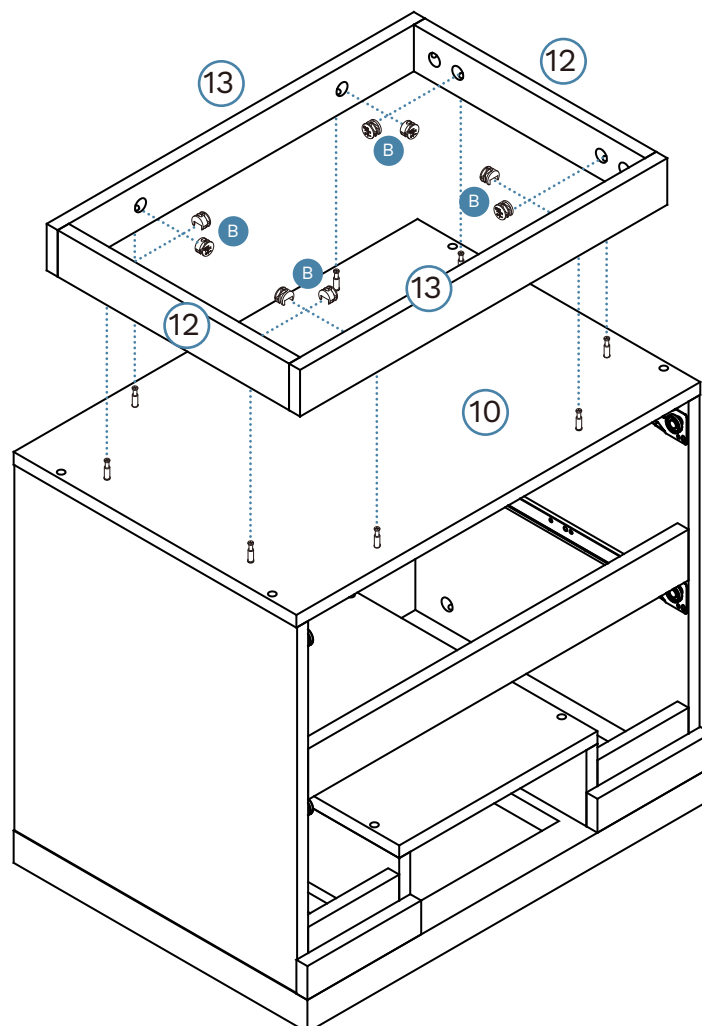
### 13



#### Hardware Needed

A		x4
B		x4

### 14

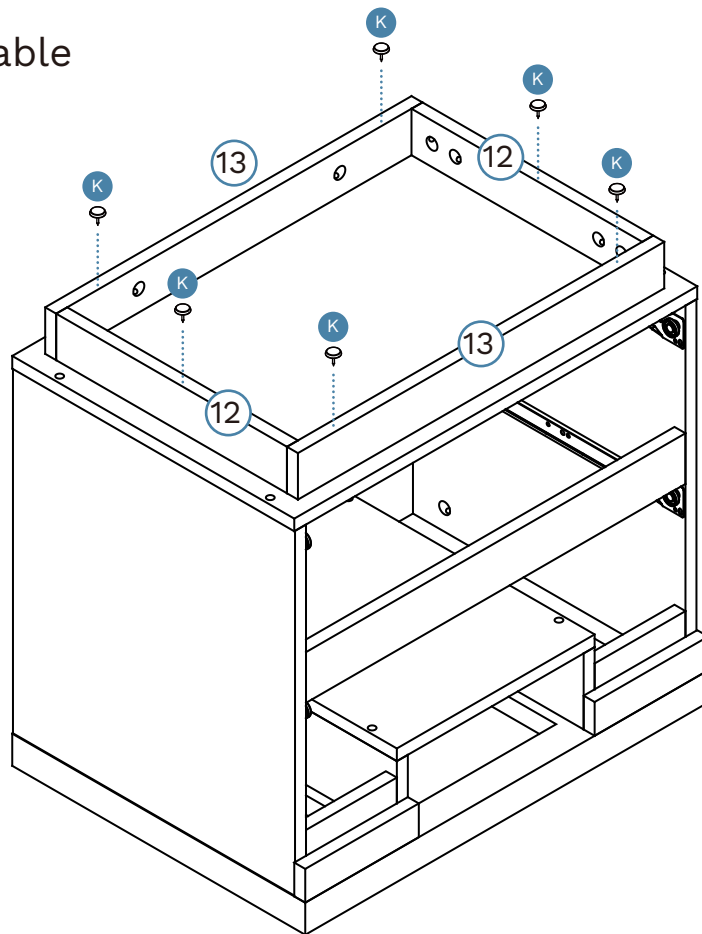


#### Hardware Needed


B		x8
---	---	----

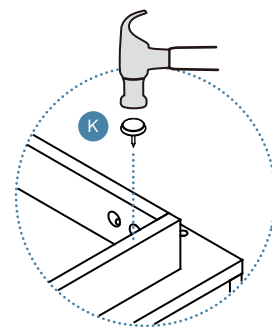
## Sadie Bedside Table

### 15



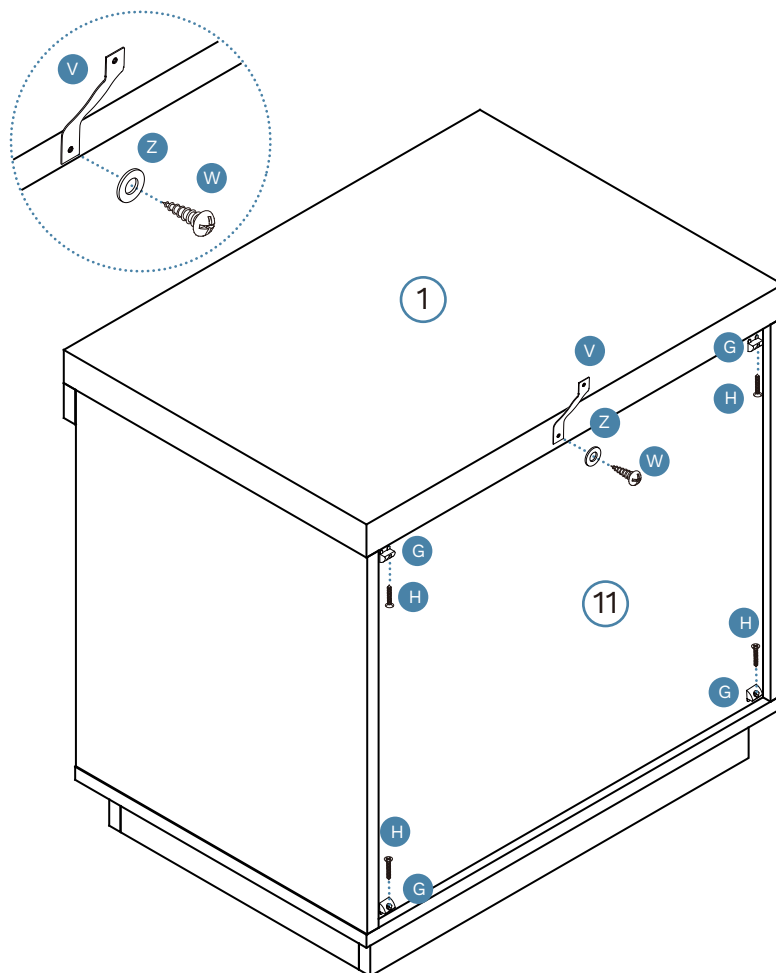
#### Hardware Needed

K		x6
---	---	----



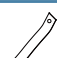




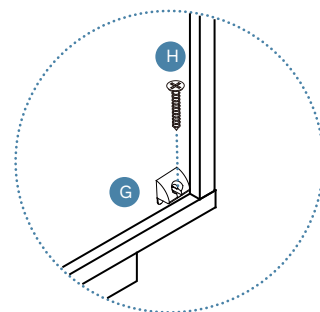
TURN OVER

### 16



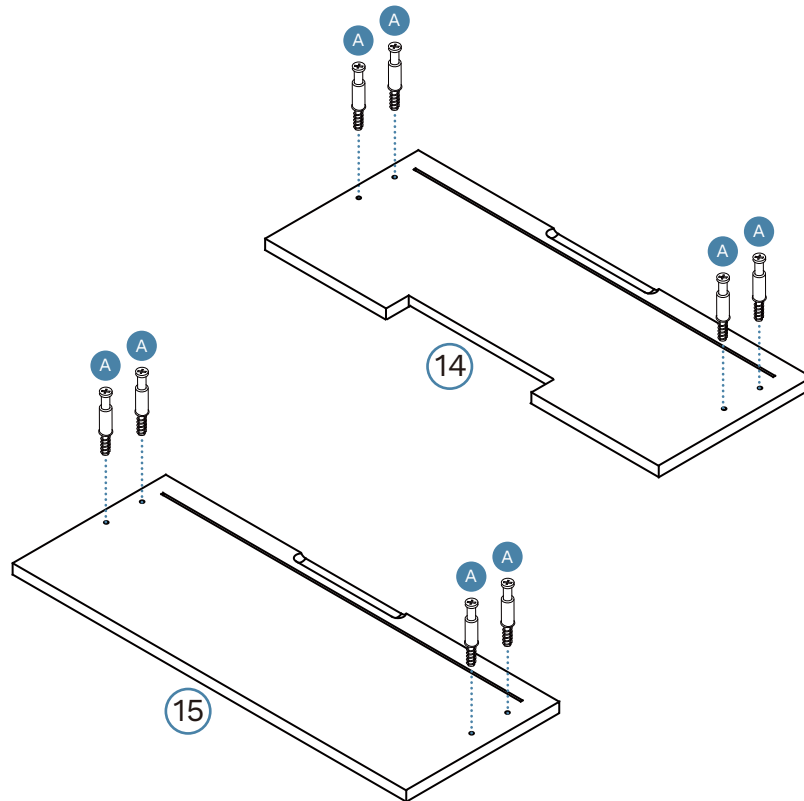
#### Hardware Needed

G		x4
H		x4
V		x1
W		x1
Z		x1



## Sadie Bedside Table

### 17



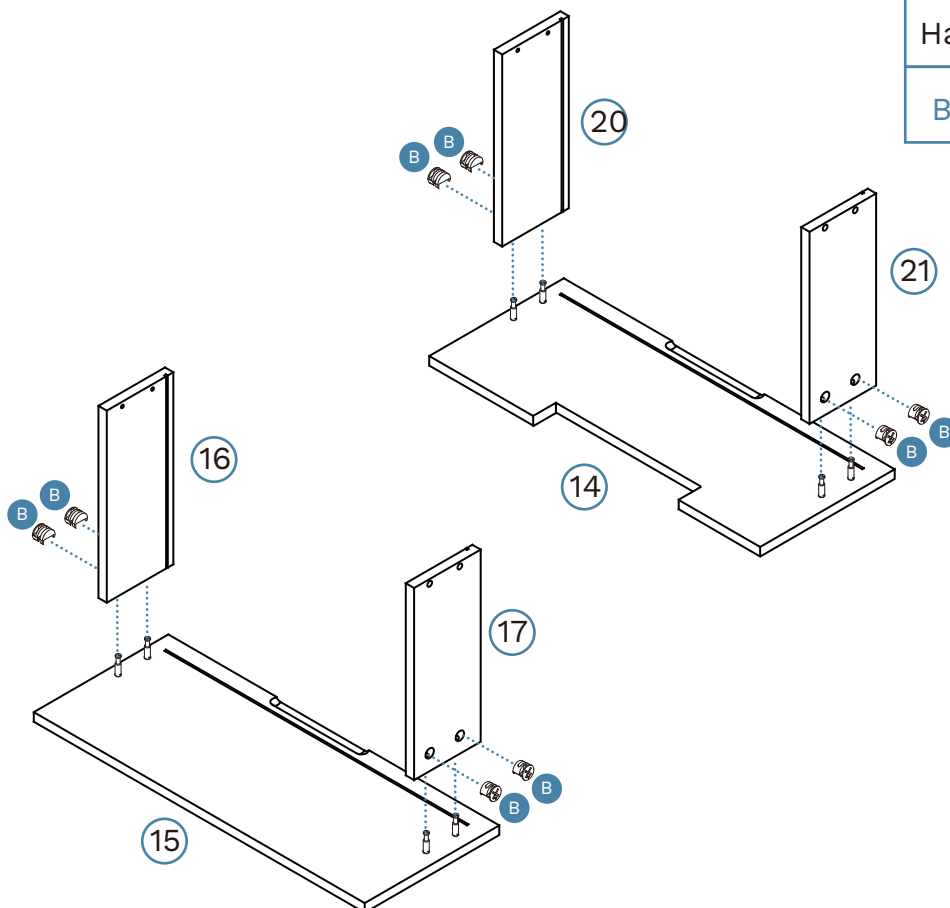
#### Hardware Needed

A



x8

### 18



#### Hardware Needed

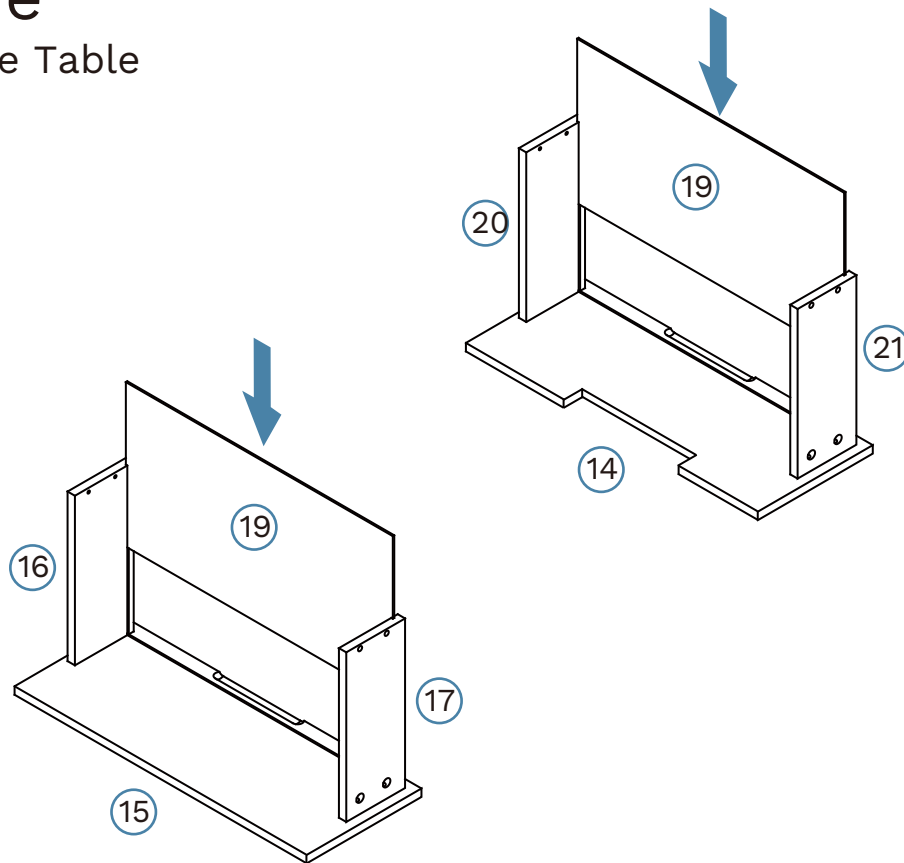
B



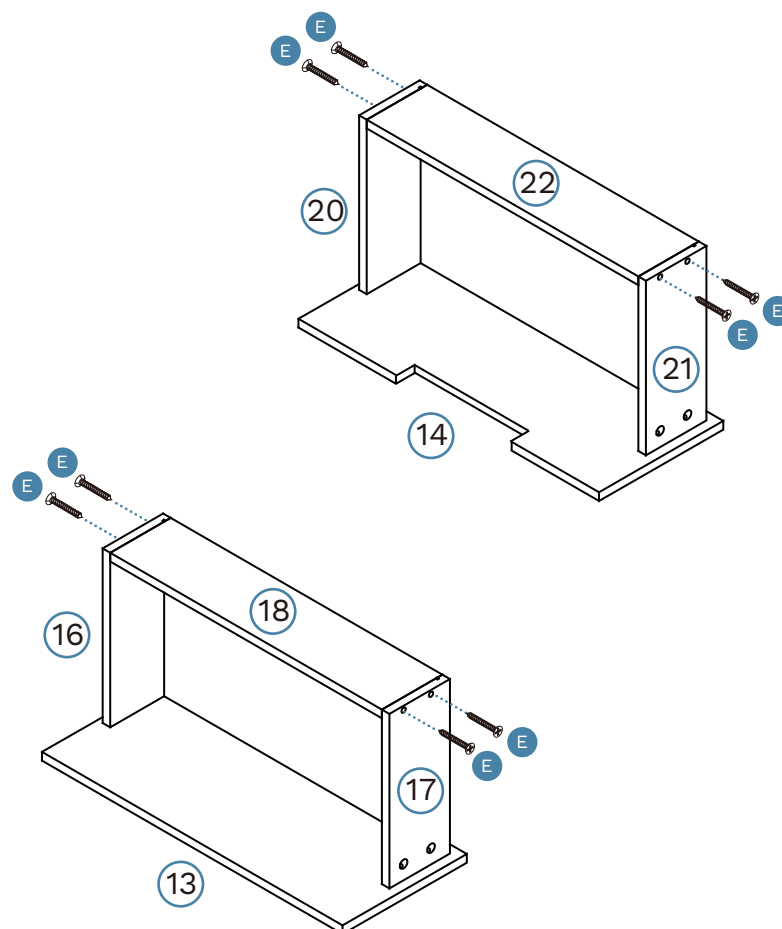
x8

## Sadie Bedside Table

### 19



### 20



Hardware Needed

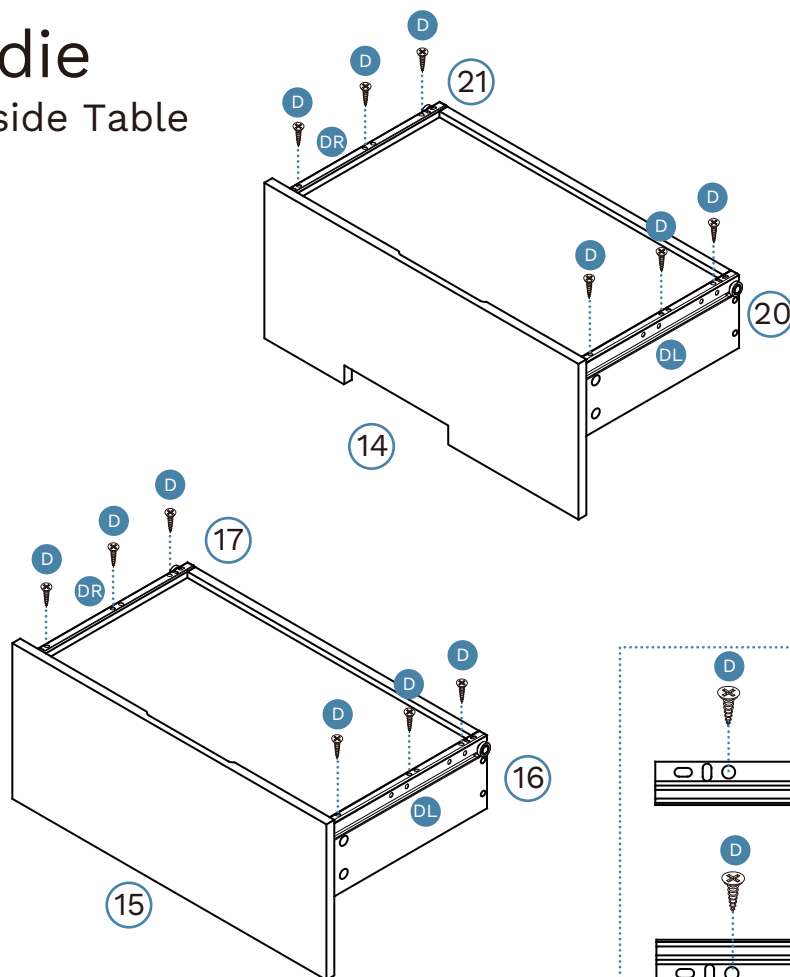
E



x8

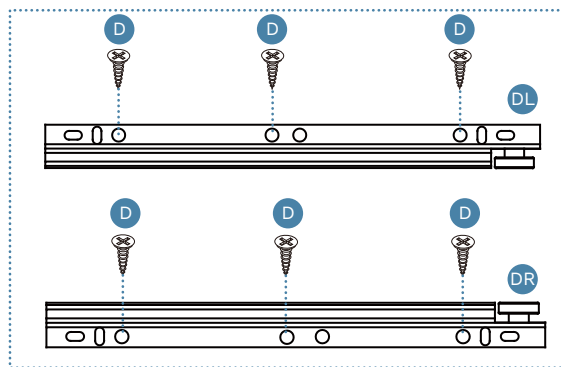
## Sadie Bedside Table

### 21

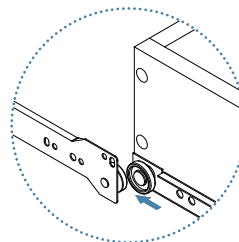
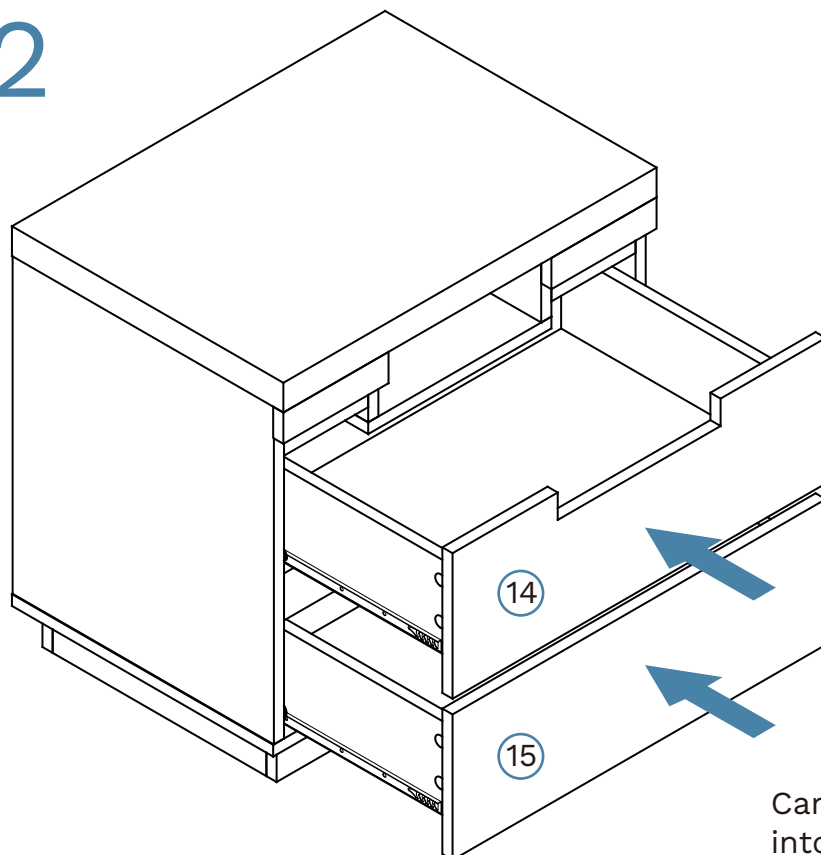


#### Hardware Needed

D		x12
DL		x2
DR		x2



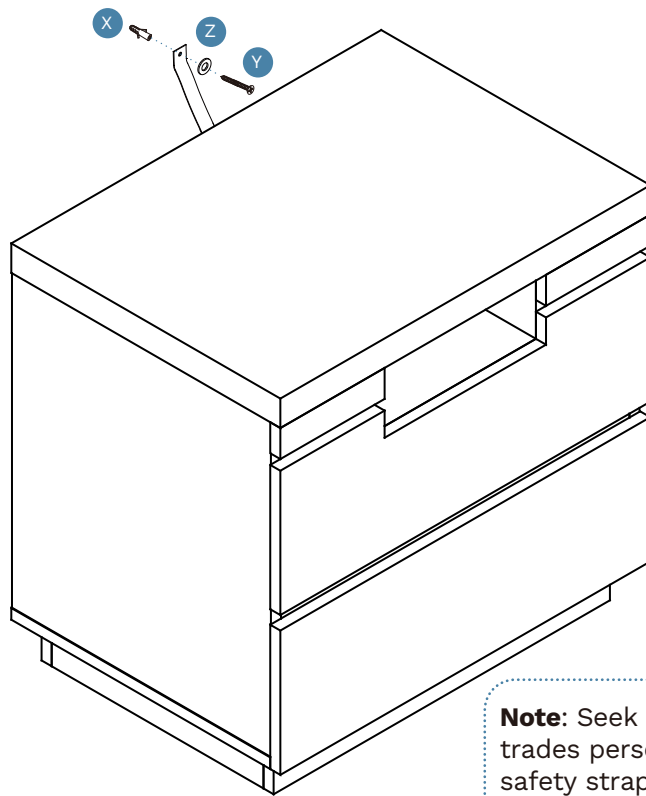
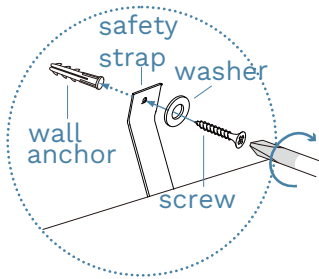
### 22



Carefully insert the drawers into the unit by gently guiding the runners into the tracks.

## Sadie Bedside Table

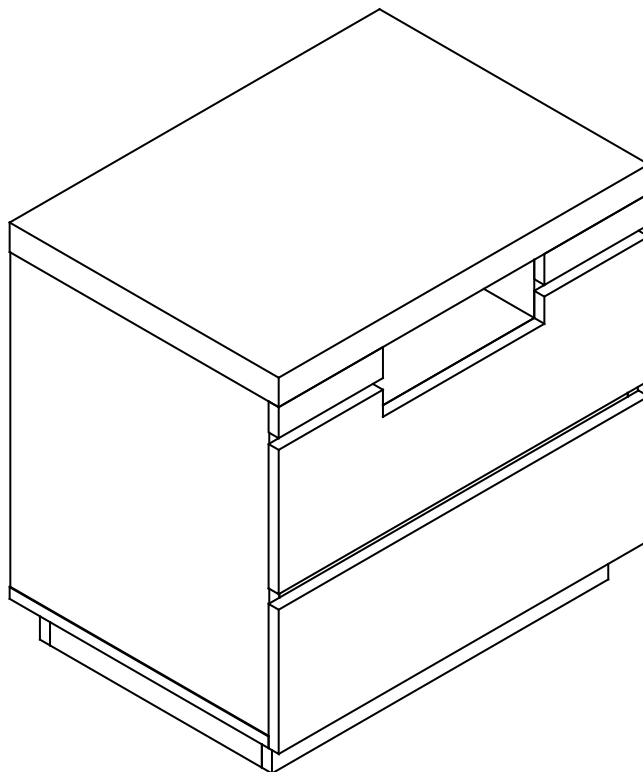
### 23



Hardware Needed		
X		x1
Y		x1
Z		x1

**Note:** Seek advice from a qualified trades person on how to attach this safety strap to your specific wall.

### 24



Once assembled lift furniture into place, do not drag. You're done, enjoy!